



COMMUNICATION

ERMAN provides a convenient interface to PCs by displaying a WEB server that can be accessed either locally via an Ethernet port or remotely, by connecting this port to any routing device to external WANs.



POWER/SUPPLY

ERMAN can be powered indifferently by DC or AC voltages at 50 / 60Hz. It follows that the power connector has no defined polarity.



SERIAL LAN

ERMAN can control external devices connected through an RS485 serial LAN.



ERMAN • Smart Network Converter

ERMAN is a remote monitoring and remote control module on Ethernet network for private and industrial process machinery.

The convenient WEB interface with which it is installed, allows all the initial configuration operations and the display and display of the quantities on a synoptic panel that can be exported to any WEB enabled device.

The final interface is a dynamic WEB site through which you can view the machine status and / or implement basic or advanced configurations

Through a configuration application it is possible to set the internal parameters of the machine individually.

- PC based communication interfaces
- Access to the site through a 2-level password

IDENTIFICATION

- Plant description
- MAC address of the machine
- Network name for DHCP settings
- Domain membership in the optional acquisition process of a dynamic IP address.

ETHERNET NETWORK

- SOFT-RESET on ethernet cable disconnection
- DHCP functionality
- Static IP address
- IP subnet mask
- Address of the Gateway to the Internet
- TCP / IP port for ERMAN's internal WEB server

SERIAL INTERFACE

- Serial server for the management of up to 3 ports including RS323, TTL, RS485, WIRELESS
- TCP / IP port setting
- Local MODBUS ID
- Configuration of serial ports
- Latency configuration
- Enabling the administrator / user password request to activate serial functions



ETHERNET

The ERMAN main connection consists of a 10/100 MBPS Ethernet network interface.

The connection is a standard Ethernet type.



SERIAL PORT

ERMAN is equipped with two independent serial ports,



KNX INTERFACE

ERMAN also provides a KNX interface (as an alternative to wireless RS485) that performs a routing between the Ethernet port (Modbus RTU) and the RS485 wired port (Modbus RTU).

SECURITY

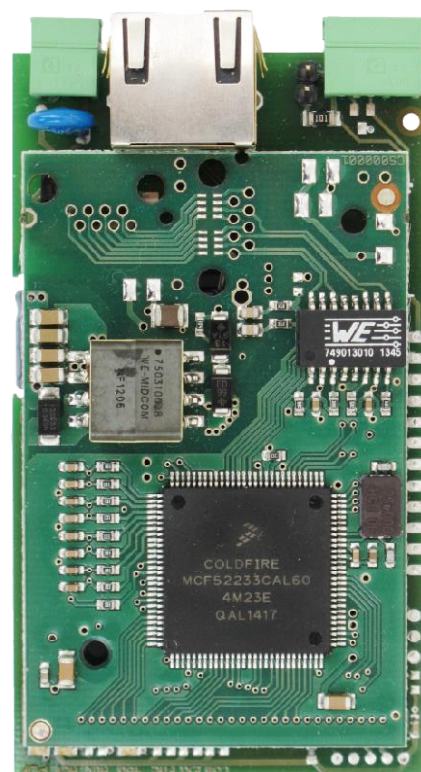
- 2 levels nickname and password customization
- Activation of Master Alarm in the event of serious machine malfunctions.

ADDITIONAL PARAMETERS

- Date / time setting, NTP server address
- ERMAN functional parameters reset
- Network parameters reset
- Reboot
- Firmware update

DIRECT COMMUNICATION APPLICATION over SERIAL LAN

- Management of local SERIAL LANs in order to send MESSAGES and MODBUS COMMANDS on SERIAL NETWORKS
- JBUS option
- IN, OUT, LOOP and Diagnostics communication



ERMAN • Smart Network Converter top

HARDWARE	
	Coldfire V2 Core, 32-bit
	64Kb RAM, 256 Kb FLASH
	+ max 64MB SPI external flash
INTERFACES	
	MAC + PHY Ethernet a 10/100Mbps CAT5e
	EIA232 + RS485 + seriale TTL + LVTTTL
	SDIO, I2C, QSPI, Digital + Analog I/O
	Wireless 868Mhz MESH (optional)
	KNX interface (optional)
	PowerLine interface, ideal for AC BT (optional)
POWER SUPPLY	
	Alimentatore 12V AC 50-60 Hz / 12- 24V DC